

Polygam[®] S/D

Immune Globulin Intravenous (Human)

SOLVENT/DETERGENT TREATED

SAMPLE INSTRUCTIONS ONLY

Directions for use are provided with the product and may be frequently revised. This insert is for educational purposes only. When performing laboratory techniques or using the product in therapeutic situations, use only package insert supplied with the product.

Immune Globulin Intravenous (Human) Polygam[®] S/D

SOLVENT/DETERGENT TREATED

This product is derived from blood collected from volunteer donors.

DESCRIPTION

Immune Globulin Intravenous (Human) [IGIV] Polygam[®] S/D* is a solvent/detergent treated, sterile, freeze-dried preparation of highly purified immunoglobulin G (IgG) derived from large pools of human plasma. The product is manufactured by the Cohn-Oncley cold ethanol fractionation process followed by ultrafiltration and ion exchange chromatography.

The manufacturing process includes treatment with an organic solvent/detergent mixture,^{1,2} composed of tri-n-butyl phosphate, octoxynol 9 and polysorbate 80.³ The Polygam[®] S/D manufacturing process provides a significant viral reduction in *in vitro* studies. These studies, summarized in Table 1, demonstrate virus clearance during Polygam[®] S/D manufacturing using infectious human immunodeficiency virus, Types 1 and 2 (HIV-1, HIV-2); bovine viral diarrhoea virus (BVD), a model virus for hepatitis C virus; sindbis virus (SIN), a model virus for lipid-enveloped viruses; pseudorabies virus (PRV), a model virus for lipid-enveloped DNA viruses such as herpes; vesicular stomatitis virus (VSV), a model virus for lipid-enveloped RNA viruses; hepatitis A virus (HAV) and encephalomyocarditis virus (EMC), a model virus for non-lipid enveloped RNA viruses; and porcine parvovirus (PPV), a model virus for non-lipid enveloped DNA viruses. These reductions are achieved through a combination of process chemistry, partitioning and/or inactivation during cold ethanol fractionation and the solvent/detergent treatment.²

TABLE 1
In Vitro Virus Clearance During Polygam[®] S/D Manufacturing

Process Step Evaluated	Virus Clearance (log ₁₀)									
	Lipid Enveloped Viruses								Non-Lipid Enveloped Viruses	
	BVD	HIV-1	HIV-2	PRV	SIN	VSV	EMC	HAV	PPV	
Step 1: Processing of Cryo-Poor Plasma to Fraction I+II+III Precipitate	0.6*	5.7	NT	1.0*	NT	NT	NT	0.5*	0.2*	
Step 2: Processing of Resuspended Suspension A Precipitate to Suspension B Filter Press Filtrate	1.3	4.9	NT	3.7	NT	NT	3.7	4.1	3.5	
Step 3: Processing of Suspension B Filter Press to Suspension B Cuno 70 Filtrate	0.7*	4.0	NT	4.5	NT	NT	3.0	3.9	3.9	
Step 4: Solvent/Detergent Treatment	>4.9	>3.7	5.7	>4.1	5.1	6.0	NA	NA	NA	
Cumulative Reduction of Virus (log ₁₀)	6.2	18.3	5.7	12.3	5.1	6.0	6.7	8.0	7.4	

* These values are not included in the computation of the cumulative reduction of virus since the virus clearance is within the variability limit of the assay (□□□).
NA Not Applicable. Solvent/detergent treatment does not affect non-lipid enveloped viruses.
NT Not Tested.

When reconstituted with the total volume of diluent (Sterile Water for Injection, USP) supplied, this preparation contains approximately 50 mg of protein per mL (5%), of which at least 90% is gamma globulin. The product, reconstituted to 5%, contains a physiological concentration of sodium chloride (approximately 8.5 mg/mL) and has a pH of 6.8 ± 0.4. Stabilizing agents and additional components are present in the following maximum amounts for a 5% solution: 3 mg/mL Albumin (Human), 22.5 mg/mL glycine, 20 mg/mL glucose, 2 mg/mL polyethylene glycol (PEG), 1 □□/mL tri-n-butyl phosphate, 1 □□/mL octoxynol 9, and 100 □□/mL polysorbate 80. If it is necessary to prepare a 10% (100 mg/mL) solution for infusion, half the volume of diluent should be added, as described in the **DOSAGE AND ADMINISTRATION** section. In this case, the stabilizing agents and other components will be present at double the concentrations given for the 5% solution.

The manufacturing process for Immune Globulin Intravenous (Human), Polygam[®] S/D, isolates IgG without additional chemical or enzymatic modification, and the Fc portion is maintained intact. Polygam[®] S/D contains all of the IgG antibody activities which are present in the donor population. On the average, the distribution of IgG subclasses present in this product is similar to that in normal plasma.² Polygam[®] S/D contains only trace amounts of IgA (□□ 2.2 □□/mL in a 5% solution). IgM is also present in trace amounts. Polygam[®] S/D contains no preservative.

CLINICAL PHARMACOLOGY

Immune Globulin Intravenous (Human), Polygam[®] S/D, contains a broad spectrum of IgG antibodies against bacterial and viral agents that are capable of opsonization and neutralization of microbes and toxins.

Peak levels of IgG are reached immediately after infusion of Polygam[®] S/D. It has been shown that, after infusion, exogenous IgG is distributed relatively rapidly between plasma and extravascular fluid until approximately half is partitioned in the extravascular space. Therefore, a rapid initial drop in serum IgG levels is to be expected.⁴ As a class, IgG survives longer *in vivo* than other serum proteins.^{4,5} Studies show that the half-life of Polygam[®] S/D is approximately 37.7 ± 15 days.⁴ Previous studies reported IgG half-life values of 21 to 25 days.^{4,6} The half-life of IgG can vary considerably from person to person, however. In particular, high concentrations of IgG and hypermetabolism associated with fever and infection have been seen to coincide with a shortened half-life of IgG.⁷

*Manufactured under U.S. Patent No. 4,439,421

Copyright 1986, 1987, 1988, 1989, 1990, 1994, 1995, 1997, 1998, 1999, 2000, 2001 and 2002
Baxter Healthcare Corporation. All rights reserved.

INDICATIONS AND USAGE

Polygam[®] S/D is not indicated in patients with selective IgA deficiency where the IgA deficiency is the only abnormality of concern (see **WARNINGS** section).

Primary Immunodeficiency Diseases

Polygam[®] S/D is indicated for the treatment of primary immunodeficient states, such as: congenital agammaglobulinemia, common variable immunodeficiency, Wiskott-Aldrich syndrome, and severe combined immunodeficiency.^{8,9} This indication was supported by a clinical trial of 17 patients with primary immunodeficiency who received a total of 341 infusions. Polygam[®] S/D is especially useful when high levels or rapid elevation of circulating IgG are desired or when intramuscular injections are contraindicated (e.g., small muscle mass).

B-cell Chronic Lymphocytic Leukemia (CLL)

Polygam[®] S/D is indicated for prevention of bacterial infections in patients with hypogammaglobulinemia and/or recurrent bacterial infections associated with B-cell Chronic Lymphocytic Leukemia (CLL). In a study of 81 patients, 41 of whom were treated with Polygam[®], bacterial infections were significantly reduced in the treatment group.¹⁰ In this study, the placebo group had approximately twice as many bacterial infections as the IGIV group. The median time to first bacterial infection for the IGIV group was greater than 365 days. By contrast, the time to first bacterial infection in the placebo group was 192 days. The number of viral and fungal infections, which were for the most part minor, was not statistically different between the two groups.

Idiopathic Thrombocytopenic Purpura (ITP)

When a rapid rise in platelet count is needed to prevent and/or to control bleeding in a patient with Idiopathic Thrombocytopenic Purpura, the administration of Polygam[®] S/D should be considered.

The efficacy of Polygam[®] has been demonstrated in a clinical study involving 16 patients. Of these 16 patients, 13 had chronic ITP (11 adults, 2 children), and 3 patients had acute ITP (one adult, 2 children). All 16 patients (100%) demonstrated a clinically significant rise in platelet count to a level greater than 40,000/mm³ following the administration of Polygam[®]. Ten of the 16 patients (62.5%) exhibited a significant rise to greater than 80,000 platelets/mm³. Of these 10 patients, 7 had chronic ITP (5 adults, 2 children), and 3 patients had acute ITP (one adult, 2 children). The rise in platelet count to greater than 40,000/mm³ occurred after a single 1 g/kg infusion of Polygam[®] in 8 patients with chronic ITP (6 adults, 2 children), and in 2 patients with acute ITP (one adult, one child). A similar response was observed after two 1 g/kg infusions in 3 adult patients with chronic ITP, and one child with acute ITP. The remaining 2 adult patients with chronic ITP received more than two 1 g/kg infusions before achieving a platelet count greater than 40,000/mm³. The rise in platelet count was generally rapid, occurring within 5 days. However, this rise was transient and not considered curative. Platelet count rises lasted 2 to 3 weeks, with a range of 12 days to 6 months. It should be noted that childhood ITP may resolve spontaneously without treatment.

Kawasaki Syndrome

Immune Globulin Intravenous (Human), Polygam[®] S/D, is indicated for the prevention of coronary artery aneurysms associated with Kawasaki syndrome. The percentage incidence of coronary artery aneurysms in patients with Kawasaki syndrome receiving Polygam[®] either at a single dose of 1 g/kg (n=22) or at a dose of 400 mg/kg for four consecutive days (n=22), beginning within seven days of onset of fever, was 3/44 (6.8%). This was significantly different (p=0.008) from a comparable group of patients that received aspirin only in previous trials and of whom 42/185 (22.7%) experienced coronary artery aneurysms.^{11,12} All patients in the Polygam[®] trial received concomitant aspirin therapy and none experienced hypersensitivity-type reactions (urticaria, bronchospasm or generalized anaphylaxis).¹³ Several studies have documented the efficacy of intravenous gammaglobulin in reducing the incidence of coronary artery abnormalities, resulting from Kawasaki syndrome.^{10,12,14,17}

CONTRAINDICATIONS

Patients may experience severe hypersensitivity reactions or anaphylaxis in the setting of detectable IgA levels following infusion of Polygam[®] S/D. The occurrence of severe hypersensitivity reactions or anaphylaxis under such conditions should prompt consideration of an alternative therapy. Polygam[®] S/D is contraindicated in patients with selective IgA deficiency where the IgA deficiency is the only abnormality of concern (see **INDICATIONS AND USAGE** and **WARNINGS** sections).

WARNINGS

WARNING

Immune Globulin Intravenous (Human) products have been reported to be associated with renal dysfunction, acute renal failure, osmotic nephrosis, and death.^{18,19} Patients predisposed to acute renal failure include patients with any degree of pre-existing renal insufficiency, diabetes mellitus, age greater than 65, volume depletion, sepsis, paraproteinemia, or patients receiving known nephrotoxic drugs. Especially in such patients, IGIV products should be administered at the minimum concentration available and the minimum rate of infusion practicable. While these reports of renal dysfunction and acute renal failure have been associated with the use of many of the licensed IGIV products, those containing sucrose as a stabilizer accounted for a disproportionate share of the total number.* See **PRECAUTIONS AND DOSAGE AND ADMINISTRATION** sections for important information intended to reduce the risk of acute renal failure. *Polygam[®] S/D does not contain sucrose.

Immune Globulin Intravenous (Human), Polygam[®] S/D is made from human plasma. Products made from human plasma may contain infectious agents, such as viruses, that can cause disease. The risk that such products will transmit an infectious agent has been reduced by screening plasma donors for prior exposure to certain viruses, by testing for the presence of certain current virus infections, and by inactivating and/or removing certain viruses. (See **DESCRIPTION** section.) Despite these measures, such products can still potentially transmit disease. Because this product is made from human blood, it may carry a risk of transmitting infectious agents, e.g., viruses and theoretically, the Creutzfeldt-Jakob disease (CJD) agent. ALL infections thought by a physician possibly to have been transmitted by this product should be reported by the physician or other healthcare provider to American Red Cross at 1-800-293-5023 (in the U.S.). The physician should discuss the risks and benefits of this product with the patient.

Immune Globulin Intravenous (Human), Polygam[®] S/D, should only be administered intravenously. Other routes of administration have not been evaluated.

Immediate anaphylactic and hypersensitivity reactions are a remote possibility. Epinephrine should be available for treatment of any acute anaphylactoid reactions.

Polygam[®] S/D contains only trace amounts of IgA (□□ 2.2 □□/mL in a 5% solution). Polygam[®] S/D is not indicated in patients with selective IgA deficiency where the IgA

deficiency is the only abnormality of concern. It should be given with caution to patients with antibodies to IgA or IgA deficiencies that are a component of an underlying primary immunodeficiency disease for which IGIV therapy is indicated.^{2,19} In such instances, a risk of anaphylaxis may exist despite the fact that Polygam[®] S/D contains only trace amounts of IgA.

PRECAUTIONS

General

Some viruses, such as parvovirus B19 or hepatitis A, are particularly difficult to remove or inactivate at this time. Parvovirus B19 most seriously affects pregnant women, or immune-compromised individuals. Symptoms of parvovirus B19 infection include fever, drowsiness, chills and runny nose followed about two weeks later by a rash and joint pain. Evidence of hepatitis A may include several days to weeks of poor appetite, tiredness, and low-grade fever followed by nausea, vomiting, and abdominal pain. Dark urine and a yellowed complexion are also common symptoms. Patients should be encouraged to consult their physician if such symptoms appear.

There is clinical evidence of a possible association between Immune Globulin Intravenous (Human) [IGIV] administration and the potential for the development of thrombotic events. The exact cause of this is unknown; therefore, caution should be exercised in the prescribing and infusion of IGIV in patients with a history of and predisposing factors towards cardiovascular disease or thrombotic episodes.^{20,21,22} Analysis of adverse event reports^{23,24} has indicated that a rapid rate of infusion may be a risk factor for vascular occlusive events.

An aseptic meningitis syndrome (AMS) has been reported to occur infrequently in association with Immune Globulin Intravenous (Human) [IGIV] treatment.

Discontinuation of IGIV treatment has resulted in remission of AMS within several days without sequelae. The syndrome usually begins within several hours to two days following IGIV treatment. It is characterized by symptoms and signs including severe headache, nuchal rigidity, drowsiness, fever, photophobia, painful eye movements, and nausea and vomiting. Cerebrospinal fluid (CSF) studies are frequently positive with pleocytosis up to several thousand cells per cu.mm., predominantly from the granulocytic series, and elevated protein levels up to several hundred mg/dL. Patients exhibiting such symptoms and signs should receive a thorough neurological examination, including CSF studies, to rule out other causes of meningitis. AMS may occur more frequently in association with high dose (2 g/kg) IGIV treatment.

Assure that patients are not volume depleted prior to the initiation of the infusion of IGIV.

Periodic monitoring of renal function tests and urine output is particularly important in patients judged to have a potential increased risk for developing acute renal failure. Renal function, including measurement of blood urea nitrogen (BUN)/serum creatinine, should be assessed prior to the initial infusion of Polygam[®] S/D and again at appropriate intervals thereafter. If renal function deteriorates, discontinuation of the product should be considered.

For patients judged to be at risk for developing renal dysfunction, it may be prudent to reduce the amount of product infused per unit by infusing Polygam[®] S/D at a rate less than 4 mL/kg/hr (<3.3 mg IG/kg/min) for a 5% solution or at a rate less than 2 mL/kg/hr (<3.3 mg IG/kg/min) for a 10% solution.

Certain components used in the packaging of this product contain natural rubber latex.

Information For Patients

Patients should be instructed to immediately report symptoms of decreased urine output, sudden weight gain, fluid retention/edema, and/or shortness of breath (which may suggest kidney damage) to their physician.

Drug Interactions

See **DOSAGE AND ADMINISTRATION** Section.

Pregnancy Category C

Animal reproduction studies have not been conducted with Polygam[®] S/D. It is also not known whether Polygam[®] S/D can cause fetal harm when administered to a pregnant woman or can affect reproduction capacity. Polygam[®] S/D should be given to a pregnant woman only if clearly needed.

ADVERSE REACTIONS

Increases in creatinine and blood urea nitrogen (BUN) have been observed as soon as one to two days following infusion. Progression to oliguria and anuria requiring dialysis has been observed, although some patients have improved spontaneously following cessation of treatment.²⁶

Types of severe renal adverse reactions that have been seen following IGIV therapy include:

- acute renal failure
- acute tubular necrosis²⁷
- proximal tubular nephropathy
- osmotic nephrosis^{18 (see also 28-30)}

In general, reported adverse reactions to Immune Globulin Intravenous (Human), Polygam[®], in patients with either congenital or acquired immunodeficiencies are similar in kind and frequency. Various minor reactions, such as mild to moderate hypotension, headache, fatigue, chills, backache, leg cramps, lightheadedness, fever, urticaria, flushing, slight elevation of blood pressure, nausea and vomiting may occasionally occur. Slowing or stopping the infusion usually allows the symptoms to disappear promptly. Immediate anaphylactic and hypersensitivity reactions are a remote possibility. Epinephrine should be available for treatment of any acute anaphylactoid reaction (See **WARNINGS**).

Primary Immunodeficiency Diseases

Twenty-one adverse reactions occurred in 341 infusions (6%), when using Polygam[®] (5% solution), in a clinical trial of 17 patients with primary immunodeficiency.² Of the 17 patients, 12 (71%) were adults, and 5 (29%) were children (16 years or younger).

In a cross-over study comparing Polygam[®] and Polygam[®] S/D (5% solutions) conducted in a small number (n=10) of primary immunodeficient patients, no unusual or unexpected adverse reactions were observed in the Polygam[®] S/D group. The adverse reactions experienced in the Polygam[®] S/D group were similar in frequency and nature to those observed in the control group consisting of patients receiving Polygam[®].

Polygam[®], reconstituted to a concentration of 10%, was administered intravenously at rates varying from 2-11 mL/kg/hr. Systemic reactions occurred in 23 (10.5%) of 219 infusions. This compares with an adverse reaction incidence of 6% (only systemic reactions reported) for primary immunodeficient patients previously treated with a 5% solution at infusion rates varying between 2 and 8 mL/kg/hr, as described above (also, see reference 31). Local pain or irritation was experienced during 35 (16%) of 219 infusions. Application of a warm compress to the infusion site alleviated local symptoms. These local reactions tended to be associated with hand vein infusions and their incidence may be reduced by infusions via the antecubital vein.

B-cell Chronic Lymphocytic Leukemia (CLL)

In the study of patients with B-cell Chronic Lymphocytic Leukemia, the incidence of adverse reactions associated with Polygam[®] infusions was approximately 1.3% while that associated with placebo (normal saline) infusions was 0.6%.¹

Idiopathic Thrombocytopenic Purpura (ITP)

During the clinical study of Polygam[®] for the treatment of Idiopathic Thrombocytopenic Purpura, the only adverse reaction reported was headache which occurred in 12 of 16 patients (75%). Of these 12 patients, 11 had chronic ITP (9 adults, 2 children), and one child had acute ITP. Oral antihistamines and analgesics alleviated the symptoms and were used as pretreatment for those patients requiring additional IGV therapy. The remaining 4 patients did not report any side effects and did not require pretreatment.

Kawasaki Syndrome

In a study of patients (n=51) with Kawasaki syndrome, no hypersensitivity-type reactions (urticaria, bronchospasm or generalized anaphylaxis) were reported in patients receiving either a single 1g/kg dose of IGV, Polygam[®], or 400 mg/kg of IGV, Polygam[®], for four consecutive days.²⁰ Mild adverse reactions, including chills, flushing, cramping, headache, hypotension, nausea, rash, and wheezing, were reported with both dose regimens. These adverse reactions occurred in 7/51 (13.7%) patients and in association with 7/129 (5.4%) infusions. Of the 25 patients who received a single 1 g/kg dose, 4 patients experienced adverse reactions for an incidence of 16%. Of the 26 patients who received 400 mg/kg/day over 4 days, 3 experienced a single adverse reaction for an incidence of 11.5%.²

DOSAGE AND ADMINISTRATION

Primary Immunodeficiency Diseases

For patients with primary immunodeficiencies, monthly doses of at least 100 mg/kg are recommended. Initially, patients may receive 200-400 mg/kg. As there are significant differences in the half-life of IgG among patients with primary immunodeficiencies, the frequency and amount of immunoglobulin therapy may vary from patient to patient. The proper amount can be determined by monitoring clinical response. The minimum serum concentration of IgG necessary for protection has not been established.

B-cell Chronic Lymphocytic Leukemia (CLL)

For patients with hypogammaglobulinemia and/or recurrent bacterial infections due to B-cell Chronic Lymphocytic Leukemia, a dose of 400 mg/kg every 3 to 4 weeks is recommended.

Kawasaki Syndrome

For patients with Kawasaki syndrome, either a single 1 g/kg dose or a dose of 400 mg/kg for four consecutive days beginning within seven days of the onset of fever, administered concomitantly with appropriate aspirin therapy (80-100 mg/kg/day in four divided doses) is recommended.

Idiopathic Thrombocytopenic Purpura (ITP)

For patients with acute or chronic Idiopathic Thrombocytopenic Purpura, a dose of 1 g/kg is recommended. The need for additional doses can be determined by clinical response and platelet count. Up to three separate doses may be given on alternate days if required.

No prospective data are presently available to identify a maximum safe dose, concentration, and rate of infusion in patients determined to be at increased risk of acute renal failure. In the absence of prospective data, recommended doses should not be exceeded and the concentration and infusion rate selected should be the minimum level practicable. Reduction in dose, concentration, and/or rate of administration in patients at risk of acute renal failure has been proposed in the literature in order to reduce the risk of acute renal failure.²²

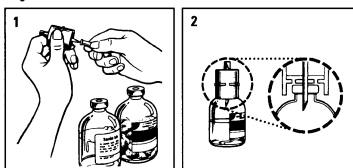
Reconstitution: Use Aseptic Technique

When reconstitution is performed aseptically outside of a sterile laminar air flow hood, administration should begin as soon as possible, but not more than 2 hours after reconstitution.

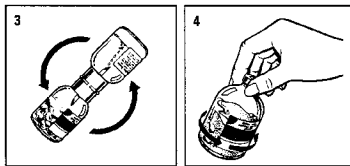
When reconstitution is performed aseptically in a sterile laminar air flow hood, the reconstituted product may be either maintained in the original glass container or pooled into Vioflex[®] bags and stored under constant refrigeration (2-8 °C), for up to 24 hours. (The date and time of reconstitution/pooling should be recorded). If these conditions are not met, sterility of the reconstituted product cannot be maintained. Partially used vials should be discarded.

A. 5% Solution

1. **Note: Reconstitute immediately before use.**
2. If refrigerated, warm the Sterile Water for Injection, USP (diluent) and Immune Globulin Intravenous (Human), Polygam[®] S/D (dried concentrate), to room temperature.
3. Remove caps from concentrate and diluent bottles to expose central portion of rubber stoppers.
4. Cleanse stoppers with germicidal solution.
5. Remove protective covering from the spike at one end of the transfer device (Fig. 1).



6. Place the diluent bottle on a flat surface and, while holding the bottle to prevent slipping, insert the spike of the transfer device **perpendicularly through the center of the bottle stopper.**
7. Press down firmly so that the transfer device fits snugly against the diluent bottle (Fig. 2). **Caution: Failure to use center of stopper may result in dislodging the stopper.**
8. Remove the protective covering from the other end of the transfer device. Hold diluent bottle to prevent slipping.
9. Hold concentrate bottle firmly and at an angle of approximately 45 degrees. Invert the diluent bottle with the transfer device at an angle complementary to the concentrate bottle (approximately 45 degrees) and firmly insert the transfer device into the concentrate bottle through the center of the rubber stopper (Fig. 3).



Note: Invert the diluent bottle with attached transfer device rapidly into the concentrate bottle in order to avoid loss of diluent.

Caution: Failure to use center of stopper may result in dislodging the stopper and loss of vacuum.

10. The diluent will flow into the concentrate bottle quickly. When diluent transfer is complete, remove empty diluent bottle and transfer device from concentrate bottle. Discard transfer device after single use.
11. Thoroughly wet the dried material by tilting or inverting and gently rotating the bottle (Fig. 4). **Do not shake. Avoid foaming.**
12. Repeat gentle rotation as long as undissolved product is observed.

B. 10% Solution

- Follow steps 1-4 as previously described in A.
5. To prepare a 10% solution, reconstitute with the appropriate volume of diluent as indicated in Table 2, which indicates the volume of diluent required for 5% or 10% concentration. Using aseptic technique, draw the required volume of diluent into a sterile hypodermic syringe and needle. Discard the filled syringe.
 6. Using the residual diluent in the diluent vial, follow steps 5-12 as previously described in A.

TABLE 2
Required Diluent Volume

Concentration	2.5g bottle	5g bottle	10g bottle
5%	50 mL	96 mL	192 mL
10%	25 mL	48 mL	96 mL

Rate of Administration

It is recommended that initially a 5% solution be infused at a rate of 0.5 mL/kg/hr. If infusion at this rate and concentration causes the patient no distress, the administration rate may be gradually increased to a maximum rate of 4 mL/kg/hr. Patients who tolerate the 5% concentration at 4 mL/kg/hr can be infused with the 10% concentration starting at 0.5 mL/kg/hr. If no adverse effects occur, the rate can be increased gradually up to a maximum of 8 mL/kg/hr. For patients judged to be at risk for developing renal dysfunction, it may be prudent to reduce the amount of product infused per unit time by infusing Immune Globulin Intravenous (Human), Polygam[®] S/D, at a rate less than 4 mL/kg/hr (<3.3 mg IG/kg/min) for a 5% solution or at a rate of less than 2 mL/kg/hr (<3.3 mg IG/kg/min) for a 10% solution.

It is recommended that antecubital veins be used especially for 10% solutions, if possible. This may reduce the likelihood of the patient experiencing discomfort at the infusion site (see **ADVERSE REACTIONS**).

A rate of administration which is too rapid may cause flushing and changes in pulse rate and blood pressure. Slowing or stopping the infusion usually allows the symptoms to disappear promptly.

Drug Interactions

Admixtures of Immune Globulin Intravenous (Human), Polygam[®] S/D, with other drugs and intravenous solutions have not been evaluated. It is recommended that Polygam[®] S/D be administered separately from other drugs or medications which the patient may be receiving. The product should not be mixed with Immune Globulin Intravenous (Human) from other manufacturers.

Antibodies in immune globulin preparations may interfere with patient responses to live vaccines, such as those for measles, mumps, and rubella. The immunizing physician should be informed of recent therapy with Immune Globulin Intravenous (Human) so that appropriate precautions can be taken.

Administration

Polygam[®] S/D should be administered as soon after reconstitution as possible, or as described in the **DOSAGE AND ADMINISTRATION** section.

The reconstituted material should be at room temperature during administration.

Parenteral drug products should be inspected visually for particulate matter and discoloration prior to administration, whenever solution and container permit.

Reconstituted material should be a clear to slightly opalescent and colorless to pale yellow solution. Do not use if particulate matter and/or discoloration is observed.

Follow directions for use which accompany the administration set provided. If another administration set is used, ensure that the set contains a similar filter.

HOW SUPPLIED

Polygam[®] S/D is supplied in 2.5 g, 5 g, or 10 g single use bottles. Each bottle of Polygam[®] S/D is furnished with a suitable volume of Sterile Water for Injection, USP, a transfer device and an administration set which contains an integral airway and a 15 micron filter.

STORAGE

Polygam[®] S/D is to be stored at a temperature not to exceed 25 °C (77 °F). Freezing should be avoided to prevent the diluent bottle from breaking.

REFERENCES

1. Prince AM, Horowitz B, Brotman B: Sterilisation of hepatitis and HTLV-III viruses by exposure to tri-n-butyl phosphate and sodium cholate. *Lancet* 1: 706-710, 1986
2. Horowitz B, Wiebe ME, Lippin A, et al: Inactivation of viruses in labile blood derivatives. I. Disruption of lipid enveloped viruses by tri-n-butyl phosphate detergent combinations. *Transfusion* 25:516-522, 1985
3. Unpublished data in the files of Baxter Healthcare Corporation
4. Waldmann TA, Storer W: Metabolism of immunoglobulins. *Prog Allergy* 13:1-110, 1969
5. Morell A, Riesen W: Structure, function and catabolism of immunoglobulins in **Immunohemotherapy**. Nydegger UE (ed), London, Academic Press, 1981, pp 17-26
6. Stiehm ER: Standard and special human immune serum globulins as therapeutic agents. *Pediatrics* 63:301-319, 1979
7. Buckley RH: Immunoglobulin replacement therapy: Indications and contraindications for use and variable IgG levels achieved in **Immunoglobulins: Characteristics and Use of Intravenous Preparations**. Alving BM, Finlayson

JS (eds), Washington, DC, U.S. Department of Health and Human Services, 1979, pp 3-8

8. Bunch C, Chapel HM, Rai K, et al: Intravenous Immune Globulin reduces bacterial infections in Chronic Lymphocytic Leukemia: A controlled randomized clinical trial. *Blood* 70 Suppl 1:753, 1987
9. Cooperative Group for the Study of Immunoglobulin in Chronic Lymphocytic Leukemia: Intravenous immunoglobulin for the prevention of infection in Chronic Lymphocytic Leukemia: A randomized, controlled clinical trial. *N Engl J Med* 319:902-907, 1988
10. Newburger J, Takahashi M, Burns JG, et al: The Treatment of Kawasaki Syndrome with Intravenous Gamma Globulin. *New England Journal of Medicine* 315:341-347, 1986
11. Furusho K, Sato K, Sueda T, et al: High Dose Intravenous Gammaglobulin for Kawasaki Disease [Letter]. *Lancet* 2:1359, 1983
12. Nagashima M, Matsushima M, Matsuoka H, Ogawa A, Okumura N: High Dose Gammaglobulin Therapy for Kawasaki Disease. *Journal of Pediatrics* 110:710-712, 1987
13. Data in the files of Baxter Healthcare Corporation
14. Furusho K, Hroyuki N, Shinomiya K, et al: High Dose Intravenous Gammaglobulin for Kawasaki Disease. *Lancet* 2:1055-1058, 1984
15. Engle MA, Fatima NS, Bussell JB, O'Laughlin JE, Snyder MS, Lesser ML: Clinical Trial of Single-Dose Intravenous Gammaglobulin in Acute Kawasaki Disease. *AJDC* 143:1300-1304, 1989
16. Isawa M, Sugiyama K, Kawase A, et al: Prevention of Coronary Artery Involvement in Kawasaki Disease by Early Intravenous High Dose Gammaglobulin. In: Doyle EF, Engle MA, Gerson WM, Rashkind EJ, Talner NS, eds. *Pediatric Cardiology*. New York: Springer-Verlag, 1986:1083-1085
17. Okuri M, Harada K, Yamaguchi H, et al: Intravenous Gammaglobulin Therapy in Kawasaki Disease: Trial of Low-Dose Gammaglobulin. In: Shulman ST, ed. **Kawasaki Disease**. New York: Alan R. Liss, 1987:433-439
18. Cayco AV, Perazella MA, Hayslett JP: Renal insufficiency after intravenous immune globulin therapy: A Report of Two Cases and an Analysis of the Literature. 1997; *J Amer Soc Nephrology* 8:1788-1793
19. Burks AW, Sampson HA, Buckley RH: Anaphylactic reactions after gammaglobulin administration in patients with hypogammaglobulinemia: Detection of IgE antibodies to IgA. *N Engl J Med* 314:560-564, 1986
20. Reinhardt WH, Berchtold PE: Effect of high-dose intravenous immunoglobulin therapy on blood rheology. *Lancet* 339:662-664, 1992
21. Dalakas MC: High-dose intravenous immunoglobulin and serum viscosity: Risk of precipitating thromboembolic events. *Neurology* 44:223-226, 1994
22. Harkness K, Howell SJL, Davies-Jones GAB: Encephalopathy associated with intravenous immunoglobulin treatment for Guillain-Barre syndrome. *Journal of Neurology* 60:586-598, 1996
23. Woodruff RK, Grigg AP, Firkin FC, Smith IL: Fatal thrombotic events during treatment of autoimmune thrombocytopenia with intravenous immunoglobulin in elderly patients. *Lancet* ii:217-218, 1986
24. Silbert PL, Knezevic WV, Bridge DF: Cerebral infarction complicating intravenous immunoglobulin therapy for polyneuritis crionalis. *Neurology* 42:257-258, 1992
25. Duhem C, Ducrocq M, Ries F: Side effects of intravenous immune globulins. *Clin Exp Immunol* 97: (Suppl 1) 70-83, 1994
26. Winward DB, Brophy MT: Acute renal failure after administration of intravenous immunoglobulin: review of the literature and case report. 1995; *Pharmacotherapy* 15:765-772
27. Phillips AD: Renal failure and intravenous immunoglobulin [Letter, comment]. 1992; *Clin Nephrol* 36:83-86
28. Anderson W, Bethea W: Renal lesions following administration of hypertonic solutions of sucrose. 1940; *JAMA* 114:1983-1987
29. Lindberg H, Wald A: Renal changes following the administration of hypertonic solutions. 1939; *Arch Intern Med* 63:907-918
30. Rigdon RH, Cardwell ES: Renal lesions following the intravenous injection of hypertonic solution of sucrose: A clinical and experimental study. 1942; *Arch Intern Med* 69:670-690
31. Ochs HD, Lee ML, Fischer SH, et al: Efficacy of a New Intravenous Immunoglobulin Preparation in Primary Immunodeficient Patients. *Clinical Therapeutics* 9:512-522, 1987
32. Tan E, Hajinazarian M, Bay, et al: Acute renal failure resulting from intravenous immunoglobulin therapy. 1993; *Arch Neurology* 50:137-139
33. Brannagan TH, Nagle KJ, Lange DJ, Rowland LP: Complications of intravenous immune globulin treatment in neurologic disease. *Neurology* 47:674-677, 1996
34. Hoplea SS, Farrar JT, Gibson GA, Laskin M, Pizzi LI, Ashbury AK: Thromboembolic Events Associated with Intravenous Immunoglobulin Therapy. *Neurology* 48: A54, 1997
35. Kwan T, and Keith P: Stroke Following Intravenous Immunoglobulin Infusion in a 28-Year-Old Male with Common Variable Immune Deficiency: A Case Report and Literature Review. *Canadian Journal of Allergy & Clinical Immunology* 4: 250-253, 1999
36. Elkayam O, Paron D, Milo R, Davidovitz Y, Almozino-Sarafian D, Zelster D, Yaron M, Caspi D: Acute Myocardial Infarction Associated with High Dose Intravenous Immunoglobulin Infusion for Autoimmune Disorders. A Study of four cases. *Ann Rheum Dis* 59:77-80, 2000
37. Grillo JA, Gorson KC, Ropper AH, Lewis J, Weinstein R: Rapid infusion of intravenous immune globulin in patients with neuromuscular disorders. *Neurology* 57:1699-1701, 2001
38. Gomperts ED, Darr F: Letter to the Editor: Reference article—Rapid infusion of intravenous immune globulin in patients with neuromuscular disorders. *Neurology*, 2002. In Press

BIBLIOGRAPHY

Bussell JB, Kimberly RP, Imman RD, et al: Intravenous gammaglobulin treatment of chronic idiopathic thrombocytopenic purpura. *Blood* 62:480-486, 1983

To enroll in the confidential, industry-wide Patient Notification System, call 1-888-UPDATE-U (1-888-873-2838)

Polygam is a registered trademark of the American National Red Cross.

Baxter and Vioflex are trademarks of Baxter International Inc., registered in the U.S. Patent and Trademark Office.

Manufactured by:

Manufactured for:

Baxter Healthcare Corporation



Westlake Village, CA 91362
USA
U.S. License No. 140

Blood Services
Washington, DC 20006 USA

Revised August 2002

R1210