



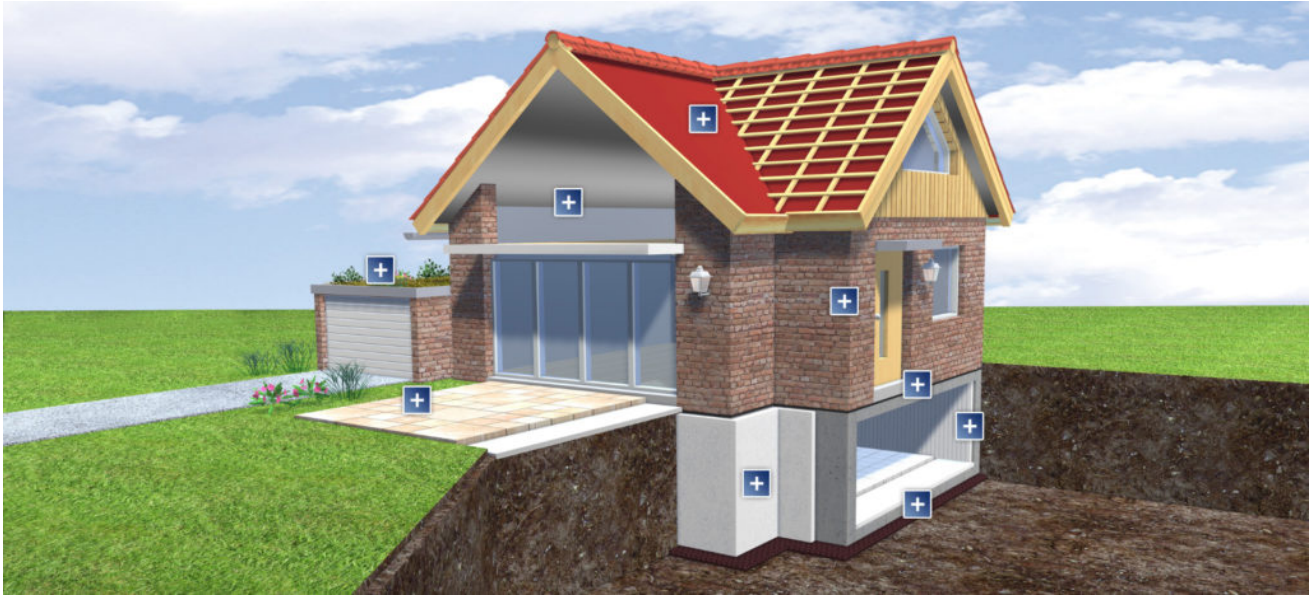
## CONTENT

- 1 About DELTA
- 2 DELTA Vent S, S Plus, SA
- 3 DELTA Flashing, Wall Flashing, FAS Corner
- 4 DELTA Multi-Band, Flexx-Band
- 5 DELTA Fassade
- 6 DELTA HF Primer, Adhesive LVC
- 7 DELTA Dry & Lath, Bugscreen
- 8 DELTA Reflex, Polyband
- 9 DELTA Than, Trela

BUILDERS & CONTRACTORS CALL  
PERFORMANCE HAUS FOR DISCOUNT  
PRICING.



# ABOUT DELTA



"We specialize in high-performance air and moisture barriers that provide superior protection to above and below grade walls in residential and commercial applications."

## Protects Property

DELTA® products control moisture and protect builder investments. DELTA® products prohibit the damaging effects of moisture that reduce overall service life and result in costly repairs.

## Saves Energy

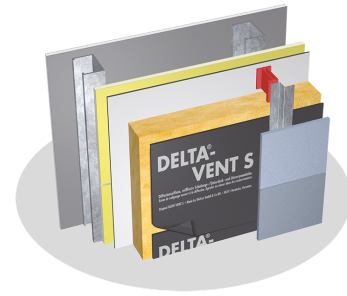
DELTA® barriers prevent inward air and moisture leakage, stopping mold from entering building spaces while maximizing energy savings. DELTA® products also have high permeability ratings, enabling faster evaporation of incidental water vapor.

## Creates Comfort

As an integral part of the building envelope, DELTA® products contribute to maximum occupant comfort by keeping spaces dry and free from mold. DELTA® products also facilitate pinpoint accuracy of internal temperature and humidity levels.

# DELTA VENT S

DELTA®-VENT S is a heavy duty, highly permeable, water-resistive barrier and air barrier. The 3-layer, spun-bonded polypropylene is suitable for all wall applications.



## PRODUCT

Vent S

## SIZE

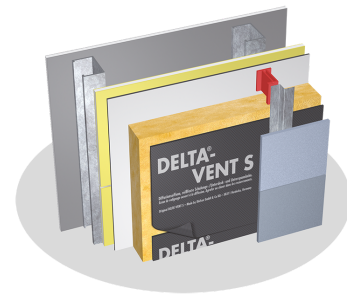
4'11" x 164'

## PRICE

\$303.80

# DELTA VENT S PLUS

DELTA®-VENT S is a heavy duty, highly permeable, water-resistive barrier and air barrier with integrated tape. The 3-layer, spun-bonded polypropylene is suitable for all wall applications.



## PRODUCT

Vent S Plus

## SIZE

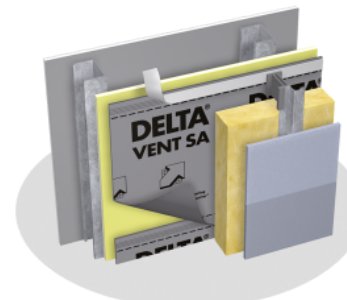
4'11" x 164'

## PRICE

\$362.62

# DELTA VENT SA

DELTA®-VENT SA is a high-performance, 3-layer water-resistant barrier and air barrier. Highly permeable, watertight, and aggressively self-adhering, the product ensures protection from wind-driven rain.



## PRODUCT

Vent SA

## SIZE

4'11" x 164'

## PRICE

\$362.62

# DELTA FLASHING

DELTA®-FLASHING is a premium, durable, self-adhering flashing that helps make an enclosure system air and water tight.



## PRODUCT

Flashing 6"

## SIZE

6" x 75'

## PRICE

\$83.62

Flashing 9"

9" x 75'

\$123.97

# DELTA THROUGH WALL FLASHING

DELTA®-TW FLASHING is a premium, durable, self-adhering flashing designed for through-wall applications. It adheres tenaciously to seal the interface between common building substrates, including lintels and brick ledges, and to all DELTA® air- and water-resistive barrier membranes.



## PRODUCT

Through Wall Flashing

## SIZE

18" x 75'

## PRICE

\$191.80

# DELTA FAS CORNER

DELTA®-FAS CORNER is a durable, one-piece polymeric corner accessory that helps ensure air- and watertight corners for windows and doors in DELTA® air- and water-resistive barrier system installations.



## PRODUCT

FAS Corner

## SIZE

7.48" x 3.94"

## PRICE

\$8.15

# DELTA MULTI BAND

"DELTA®-MULTI BAND 60 is a versatile tape with very strong adhesion. It is highly resistant to aging, and suitable for internal and external use. Composed of pure acrylic adhesive, the product is extremely flexible.



## PRODUCT

Multi Band 60

## SIZE

2.36" x 82'

## PRICE

\$51.94

Multi Band 100

3.94" x 82'

\$111.48

# DELTA FLEXX-BAND

DELTA®-FLEXX-BAND is a connecting and sealing tape for internal and external detail elements such as dormer windows, soil pipes, and cables.

The product is composed of stretchable bitumen-rubber adhesive on a special non-woven fabric, allowing for great adhesion and stretchability.



## PRODUCT

Flexx-Band

## SIZE

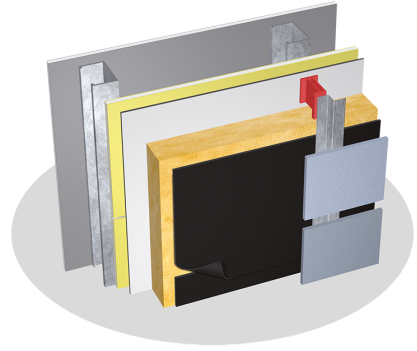
2.36" x 82'

## PRICE

\$51.94

# DELTA FASSADE

The first butted fastener, water-resistive barrier designed to maximize building protection without compromising aesthetics in open-joint cladding applications.



PRODUCT	SIZE	PRICE
Fassade S	4'11" x 164'	\$966.14
Fassade S Plus	4'11" x 164'	\$1,113.45
Fassade Tape	2.5" x 65'7"	\$40.48
Fassade Flashing Tape	4" x 65'7"	\$77.17

# DELTA HF PRIMER

DELTA®-HF PRIMER is a solvent-free primer for most construction substrates.



## PRODUCT

HF Primer

## SIZE

5L

## PRICE

\$150.00

# DELTA ADHESIVE LVC

DELTA®-ADHESIVE LVC is an emulsion, rubber-based adhesive. It is a surface preparation that increases bond strength of self-adhering membranes.



## PRODUCT

HF Primer

## SIZE

17L

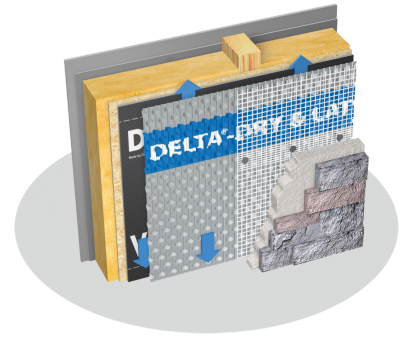
## PRICE

\$295.00



# DELTA DRY & LATH

The DELTA®-DRY & LATH is a 2-in-1 product that combines the proven technology of the DELTA®-DRY rainscreen with an innovative fiberglass lath for a complete, one-step moisture control and lath system in one.



## PRODUCT

Dry & Lath

## SIZE

3.3' x 50'

## PRICE

\$89.99

# DELTA BUG SCREEN

The DELTA®-DRY & LATH is a 2-in-1 product that combines the proven technology of the DELTA®-DRY rainscreen with an innovative fiberglass lath for a complete, one-step moisture control and lath system in one.



## PRODUCT

Bug Screen

## SIZE

5' x 1.5" x .5"

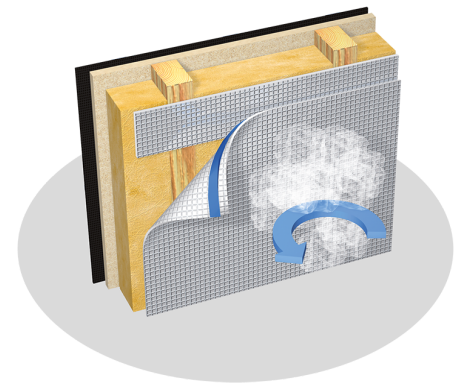
## PRICE

\$68.13



# DELTA REFLEX

DELTA®-REFLEX is completely impermeable to water vapor. This highly effective barrier helps to prevent wetting and damage of thermal insulation, protecting the building enclosure for many years to come.



## PRODUCT

Reflex

## SIZE

4.9" x 164'

## PRICE

\$89.99

# DELTA POLY BAND

DELTA®-POLY BAND is an aluminized, tear-resistant polypropylene adhesive tape with high adhesive strength. It is highly resistant to aging.



## PRODUCT

Poly Band

## SIZE

3.9" x 328'

## PRICE

\$68.13

# DELTA-THAN

DELTA®-THAN is a permanent sealing compound for fixing, bonding, and seam jointing DELTA® membrane products. The sealant provides maximum reliability for outside joints. It can therefore be used to secure connections.



## PRODUCT

Than

## SIZE

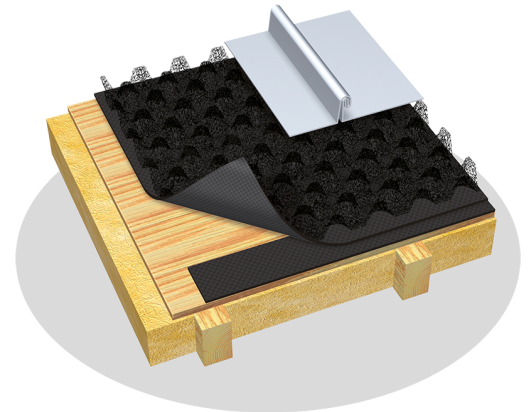
310 ml

## PRICE

\$17.21

# DELTA-TRELA

DELTA®-TRELA is a vapor-permeable underlayment with structured separation and drainage - specifically designed for metal roofs and façades with metal cladding, preventing corrosion and moisture accumulation underneath panels and ensuring the longevity of your metal roof.



## PRODUCT

Trela

## SIZE

3'3" x 98'

## PRICE

\$68.13