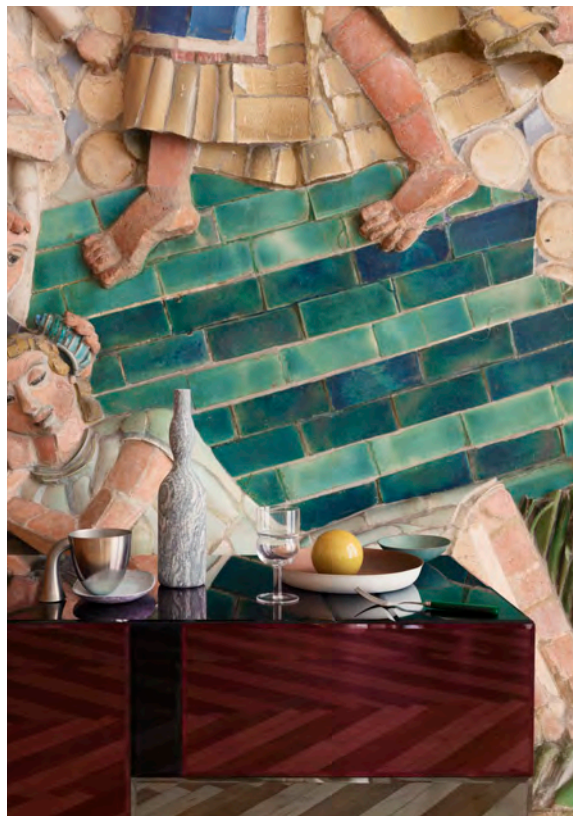


In the atmospheric rooms of Copenhagen's old concert hall, bold and dusty colours unfold and materials clash with elegance. Sculptural furniture and arty objects make a modern statement against the decorative architectural details.

BY PERNILLE VEST PHOTO FREDERIK LINDSTRØM

/
NORDIC
SYMPHONY
/



ASSISTENTS MERETE VEF SYNBORG AND CAMILLA SKJOLDBORG PHOTO ASS. CORNELIA GRANOW

Opposite: NOUVEAU TABLE (Reflections Copenhagen). *On the table:* SUPPORT CONTAINER in tin, design Aldo Bakker (Karakter). OVAL DISH in ceramics (Charlotte Serup). OMAGGIO A MORANDI OBJECT in marble, design Elisa Ossino (Salvatori). SFERICO GLASS, design Joe Colombo (Karakter). ROSE PLATE (Stilleben). YELLOW BALL (Søstrene Grene). SABRE FORK (Beau Marché). CERAMIC BOWL (Charlotte Serup).

POUF, design Missoni (Privé Copenhagen). BROWN TABLE, design Aldo Bakker (Karakter). *On the table:* STACK OF BOOKS (Hay). YELLOW BALL (Søstrene Grene). SMALL BOOK (Cinnober). VINTAGE VASE (Beau Marché). OMAGGIO A MORANDI OBJECT in marble, design Elisa Ossino (Salvatori). AS IF BOWL in porcelain, design Kueng Caputo (Copenhagen Design Agency). MINIMA MORALIA SCREEN, design Christophe de la Fontaine (Beau Marché). CATCH CHAIR JH15, design Jaime Hayon (&tradition). COMFORT RUGS (Witek Golik). CUBE in tiles (Ikon København). CERAMIC VASE (Maria Lenskjold). ROSE ball in marble (Kaja Skytte). COLLAGE, by Souvanni Asmussen (Stilleben). THE HEPWORTH COLLECTION 04 ART PRINT, by Atelier by Mintstudio (Stilleben). GEORGES BRAQUE EXHIBITION POSTER in green frame with double glass (The Apartment).

/ FREE FORM





CROSSING LINES

SIDE TABLE in anodised aluminium (Pettersen & Hein). COMFORT MIRROR (Witek Golik). COLLAGE, design Kristine Meyer & Sabine Lavigne (Meyer-Lavigne). PLINTH TABLE in marble, design Norm Architects (Menu). *On the table* BOOK (Cathrine Raben Davidsen). BRASS OBJECT (Toke Design). COLLAGE, by Souvanni Asmussen (Stilleben). NO. 14 ART PRINT, by Berit Mogensen Lopez (The Poster Club). NOTEBOOKS (Hay). DOG SCULPTURE in blue ceramic (The Apartment). BOOKS (Cinnober). CERAMIC OBJECT (Butik for Borddækning). NOT A SPORTS CLUB SCULPTURE in ceramic, design Frederik Nystrup-Larsen (Wood Wood). PAPERWEIGHT in glass (Hay). GUEST ARMCHAIR, design Antonio Rodriguez for La Cividina (Nué). COMFORT RUG (Witek Golik). I AND I RUNNER RUG (Image Collection). DAYBED (Tine K. Home). CUSHION (Christina Lundsteen). STANDING LAMP N° 1, design Muller Van Severen (Studio x Viaduct). COMFORT RUG (Witek Golik). TRIANGLE TABLE in glazed ceramic (CRD Studio).

COLLAGES, by Souvanni Asmussen (Stilleben). THREE PILLAR SEAT CHAIR in fossil wax and carbon (Elkeland). COMFORT RUG (Witek Golik). HEXAGON LAMP in glazed ceramic, design Cathrine Raben Davidsen (Nilufar). CLOVER LEAF SOFA, design Verner Panton (Paustian). THE MOOR RUG, design All the way to Paris (&tradition). DIAMOND SIDE TABLE in mirror (BoConcept). MIRROR TABLE (Kristina Dam Studio). *On the table:* RUBY BIRD in glass, design Oiva Toikka (Iittala). STACK OF BOOKS (Cinnober). BOOK (Stilleben). TEA-LIGHT HOLDER in crystal (Reflections Copenhagen). GREEN VINTAGE VASE (Deuxième). FLORAL SCULPTURE, design Curtis Jere (The Apartment).

/ SOFT SPOT



CANDY CUBE, design Sabine Marcelis (Etage Projects). *On the cube*: BOOKS (Cinnober). FISH GRAAL VASE, design Edward Hald (The Apartment). TRIANGLE LAMP in glazed ceramic, design Cathrine Raben Davidsen (Nilufar). TABLE, design Fie Norsker (Les Gens Heureux). *On the table*: BRASS OBJECT (Toke Design). COLLAGES, by Souvanni Asmussen (Stilleben). DROP VASE, design We Design (Beau Marché). BOOKS (Cinnober). VINTAGE CERAMIC VASE (The Apartment). VASE in coloured crystal (Reflections Copenhagen). COMFORT MIRROR (Witek Golik). RED PIEDESTAL SCULPTURE (Maria Lenskjold).

/ GRAPHIC COLLAGE



POUF, design Missoni (Privé Copenhagen). MIRROR, design Ida Linea Hildebrand (Friends & Founders). MOBIL 70 PENDANT, design Monika Mulder (Phloc). DINING TABLE made of recycled denim textile board from Really (Kvadrat). MY CHAIR, design Nicolai Wiig Hansen (Normann Copenhagen). BEETLE CHAIR upholstered in Missoni textile, design GamFratesi (Privé Copenhagen). HOMETABLE in concrete and steel, design Pettersen & Hein (Etage Projects). MONDO RUG, design Urd Moll Gundermann (Linie Design). *On the table*: CERAMIC VASE (Maria Lenskjold). OMAGGIO A MORANDI OBJECT in marble, design Elisa Ossino (Salvatori). SMALL MILK JUG, design Christiane Perrochon (Stilleben). VASE in light green stoneware, design Christiane Perrochon (Stilleben). VASE BOULE in rose stoneware, design Christiane Perrochon (Stilleben). VASE in yellow stoneware, design Karin Blach Nielsen (Stilleben). VASE in turquoise stoneware, design Christiane Perrochon (Stilleben). SFERICO GLASS, design Joe Colombo (Karakter).



/ MOSAIC ART

LOCATION. The Royal Danish Academy of Music has been training classical musicians for professional careers since 1867. The internationally acclaimed academy is housed in the building formerly known as Radiohuset designed by the Danish architect Vilhelm Lauritzen in the 1930s. The monumental relief, made by Henrik Starcke, has a musical theme. The Danish sculptor used broken ceramics and bricks in his works.